

OPEN YOUR HOUSE
TO THE
Beauty of the Seasons



Elements™

SUNROOMS

by LIVINGSPACE SUNROOMS LLC



Cathedral EcoGreen Roof; Transoms, Double Slider Windows; European White Interior; EcoGreen Knee Wall

*All year round,
your window
on the world*



Cathedral Polycarbonate Roof; Sliding Windows;
European White Interior; Glass Knee Wall

Open up your house

LET THE SUN SHINE IN

If you're tired of looking at walls in your house, a sunroom is a wonderful solution. Now you can have the vistas and natural sunlight of the outdoors in the comfort of your own home.

Beautiful, durable and low maintenance, an Elements sunroom will create an open environment like you've never experienced before.

Our sunrooms are entirely custom designed and fabricated for your specific space; and our range of exterior and interior options will allow the new addition to blend seamlessly with any architectural style or interior décor. Expandable and upgradeable, an Elements sunroom will provide year round comfort and enjoyment for many years to come.

NOT JUST ANOTHER ROOM

An Elements sunroom is totally unlike any other room in your house. Whatever you do at home now, you'll enjoy doing it more in your new Elements sunroom. Filled with natural light, it makes a fantastic art studio, hobby or craft room. Children or grandchildren will love this space as a play room. It works as a library or quiet reading room to get away from it all or take a nap. Enjoy the early morning light with your daily paper. You'll be absolutely amazed at how plants will blossom and thrive in this light-filled environment! Or it may become an all purpose room, since every member of your family will want to spend time there. Whatever your use, from the first moment you set foot in it, this will be your new favorite room! *An Elements sunroom doesn't just increase your floor plan – it expands your lifestyle.*

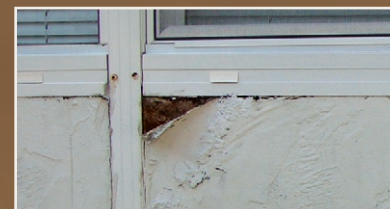
PROTECT YOUR HOME INVESTMENT

If you've considered moving, found the market unfavorable, or want to upgrade your home, a sunroom is a great way to expand your living space at a reasonable cost. **Elements offers the best built, highest quality sunroom system in the industry, with a lifetime limited warranty.** Not only will it open up new vistas and relieve crowding, an Elements sunroom is a high value investment in your home – one which will stay looking new and retain its value for the lifetime of your home.

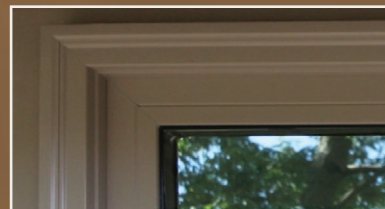
REINVENTING PERFORMANCE WITH COMPOSITES TECHNOLOGY

ELEMENTS DELIVERS A QUANTUM LEAP IN SUNROOM PERFORMANCE

Each Elements sunroom incorporates high-performance composite technology to minimize your energy costs and maximize your comfort. Gone are most standard aluminum parts, replaced with triple-ply fiberglass-reinforced pultruded polyurethane - the strongest structural components in the industry. Composites provide far greater thermal insulation than aluminum, so you will lose less heat. And composites won't shrink, expand or warp like aluminum, eliminating gaps which allow heat and water leaks. Composites won't sweat or corrode, and they are precision manufactured in our factory to fit perfectly. This is not just vinyl cladding clipped to aluminum like others out there that can potentially warp and twist. This is a solid vinyl extrusion with reinforced chambers.



The painted aluminum used by other manufacturers scratches, sweats, and shrinks and expands with the temperature, causing gaps for heat and water leaks.



Elements reinforced composite structural wall parts minimize the effects of thermal expansion and contraction, eliminating unsightly and problematic gaps.

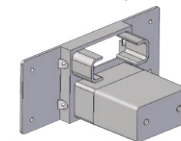
STRUCTURAL STABILITY

While most sunrooms depend on the windows for structural stability, Elements wall structures are independently strong and stable, enough to provide design flexibility and properly support the windows. You can affix or mull virtually any combination of window styles, change window and door arrangements or add options easily at a later time. This greater wall strength allows more than 20% greater window area than other sunroom systems.

HURRICANE HEADER

Our dual hollow load bearing "Hurricane Header" can easily withstand gulf coast storms or heavy midwest snow loads.

UNIQUE INTERLOCKING CONNECTION SYSTEM



The patented interlocking connection system in our walls has revolutionized the sunroom industry. Similar to a mortise and tenon system in a handcrafted Amish barn, the precision fit provides much greater strength and stability than standard bolt connections. This precision interlock means no "bending to fit" during installation, and eliminates exposed screws, boltheads, fasteners and caulking, providing a cleaner look.

ECOGREEN BUILDING SOLUTIONS

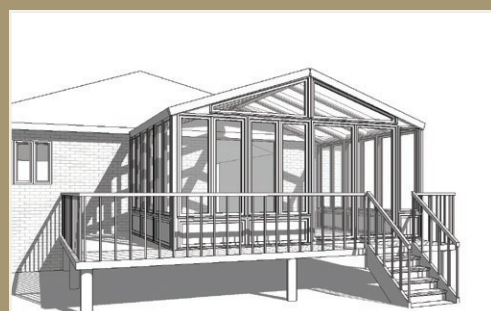
The EcoGreen system is the perfect balance of energy efficiency, thermal performance, structural superiority, design flexibility, and speed of construction. The EcoGreen roof and walls are completely non-metallic and feature high-efficiency insulation, providing up to 20% in additional energy savings. They can easily handle the snow loads of northern Canada to the hurricane wind loads of Miami beach and the seismic loads of San Francisco - all while providing the ultimate insulating values and virtually limitless design and finish options. EcoGreen provides unprecedented energy savings and maintains a stable, comfortable environment.

QUICK INSTALLATION

Our professional quality documentation and precision manufacturing means projects go up quickly and seamlessly. Most Elements sunrooms take only 2 to 5 days and create very little disruption in the household routine.

THE ELEMENTS WARRANTY

All Elements sunrooms come with a limited lifetime warranty.



INDIVIDUALLY DESIGNED & PRECISION FABRICATED

Each Elements sunroom is individually designed and engineered with CAD. No off-the-shelf stock sizes, no mixing and matching. Then parts are precision fabricated in a controlled environment using computer guided saws and positioning systems.

Elements sunrooms use the same advanced fiberglass composite technology used to build 120' long windmill blades.

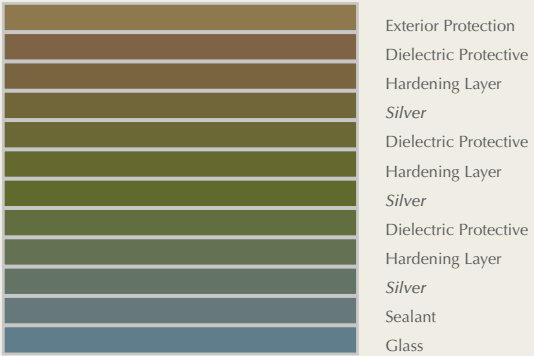


Elements insulated windows offer higher resistance to heat and cold providing you with added comfort.

ELEMENTS WINDOWS ARE MORE THAN
800 TIMES MORE THERMALLY EFFICIENT
THAN TYPICAL ALUMINUM
SUNROOM WINDOWS

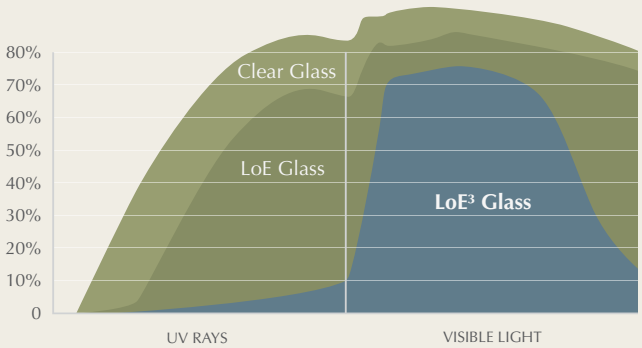
Composite structural parts, high performance LoE³ glazing, and EcoGreen foam framing work together to reduce heat loss through the structure. Elements windows are among the most efficient window systems available for ANY application and far superior to windows in other sunrooms.

LoE³ GLASS FEATURES 12 LAYERS OF PROTECTION



Elements sunrooms use the highest performing insulated window glass system in the industry, with insulating properties more than 5 times that of standard sunroom glass. LoE³ glass features an unprecedented triple layer of silver, 12 layers of protection in all.

VISIBLE LIGHT IN, HARMFUL UV RAYS OUT



LoE³ is spectrally selective, allowing visible light in while reflecting damaging UV rays, which cause furnishings to fade. The result is a light filled room with the ultimate level of year-round comfort and energy savings combined with the best fading protection.



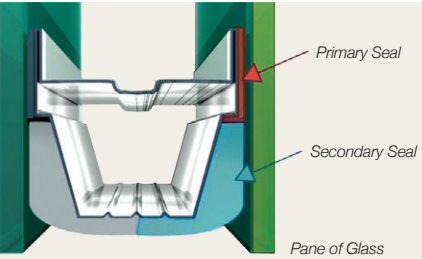
The titanium dioxide layer of our glass reacts chemically with the sun's UV rays causing organic materials on the glass to decompose. When it rains, the decomposed dirt easily rinses away.

Self Cleaning

All of our window glass is self-cleaning and uses the power of the sun's UV rays to loosen dirt so water can rinse it away, leaving windows virtually spotless. Your windows will stay cleaner longer and clean easier so you can spend more time enjoying your sunroom and less time cleaning the windows.

High Performance

Our high performance insulated glass system features a dual seal stainless steel system to separate glass panes, reducing heat transfer and potential breakage - dramatically reducing the risk of condensation on windows. All windows are Energy Star and NFRC certified, meeting or exceeding the most stringent energy requirements.



**Available options are subject to change due to supply availability. Any substitution will have equal or superior performance characteristics.*



Cathedral EcoGreen Roof; Transoms, Double Slider Windows; European White Interior; EcoGreen Knee Wall



Cathedral/Studio Combination Polycarbonate Roof; Picture and Double Slider Windows; European White Interior; Glass Knee Wall

ECOGREEN

Designed for the current energy efficient building systems, the EcoGreen structural insulating system has redefined both the design possibilities and the energy efficiency ratings of the entire sunroom industry. From the flooring system to the insulated structure to the roof, EcoGreen's tested and certified systems allow for more flexibility and greater design options. The insulating performance exceeds the International Energy Conservation and Building Code requirements for even the harshest environments. EcoGreen walls and ceilings can be finished with virtually any option to match the décor and design of the room and home.



POLYCARBONATE

To create more light and add a feeling of greater space, Elements offers the Athermic Blue Translucent roofing system, a five layer polycarbonate providing exceptional strength (200 times stronger than glass) as well as superior thermal and sound insulation. Polycarbonate is a special type of translucent and heat reflective polymer, now used in most conservatory roofs, which has been developed to provide a lightweight high performance alternative to glass, and provides thermal insulation and light diffusion superior to standard double glazing.

Custom Built

Unlike other sunrooms, all Elements sunrooms are manufactured to order. There are no "off the shelf" stock panels to build around. Your sunroom is completely customizable, will have a pleasing, symmetrical look and your view will be unhindered.

Athermic Blue Polycarbonate

Our Athermic Blue polycarbonate is five layers thick and virtually unbreakable, providing superior stiffness, and excellent thermal and sound insulation.

Design Guide

A RANGE OF OPTIONS FOR EVERY TASTE AND NEED

If you can dream it, we can do it. Elements offers a wide range of structural and decorative options to help you put together the perfect room for your family. In addition to the options listed here, we can customize your room to nearly any requirement.

ROOF STYLES



Studio

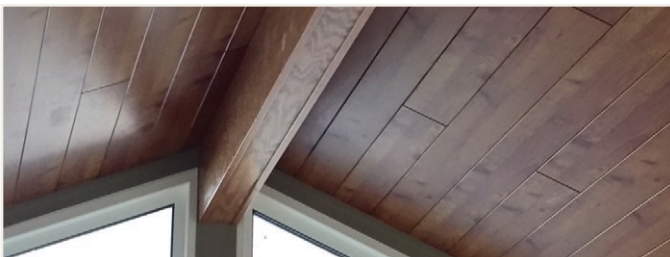


Cathedral



Integrated

DESIGNER OPTIONS



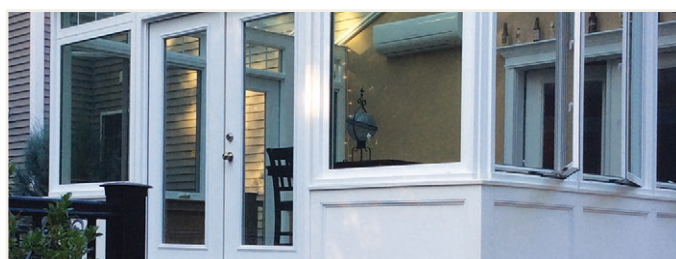
Decorative Ceiling Planks



Decorative Ridge Beam Covers



Skylights

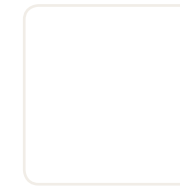


French Doors

WINDOW COLORS

Mix and match our window vinyl and wood grain options with a custom match exterior for a unique look that blends with your home. Additional charges or lead time may apply to two toned, special colors, or wood grain options.

VINYL INTERIOR:
European White



Vinyl Exterior:

European White

Tan

Antique Brown

Earthtone

Clay

VINYL INTERIOR:
Tan



Vinyl Exterior:

Tan

WOOD GRAIN INTERIOR:

Golden Oak



Colonial Cherry



Brazilian Pecan



Vinyl Exterior:

European White

Tan

Earthtone

Clay

WOOD GRAIN INTERIOR:

Provincial Oak



Vinyl Exterior:

European White

Tan

Earthtone

WINDOW STYLES



Picture/Transom



Double Slider



Double Hung



Casement



Awning



Tilt and Slide*

*May require special design considerations.

DOOR STYLES



Single



French



Sliding

ADDITIONAL OPTIONS

Decorative Ceilings

Decorative Ridge Beam Covers

Skylights

Multipoint Door Locking Hardware

Lighting Accents

Ceiling Fans

Window Treatments

Phone/Internet Connections

Opaque Wall Sections

“Doggy Door” Panels

Electrical Outlets

HVAC Systems

FOR MORE INFORMATION, VISIT OUR WEBSITE:

WWW.ELEMENTSSUNROOMS.COM

BACK COVER: Cathedral EcoGreen Roof; Transoms; Picture and Casement Windows; European White Interior; Glass and Solid Knee Wall

DON'T JUST EXPAND YOUR FLOOR PLAN

Expand Your Lifestyle



Elements

SUNROOMS

by LIVINGSPACE SUNROOMS^{LLC}

ELEMENTSSUNROOMS.COM

© 2015 LivingSpace SunroomsTM

